





Series 33 Fire-Rated Pathway

Specialty Options *continued*

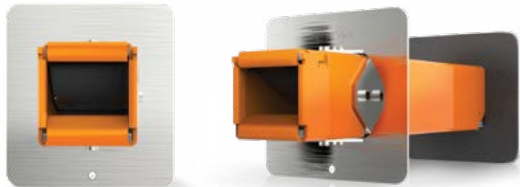
UPC# 730573	ITEM NO.	CASE QTY (min)	Previously Installed Cables Through Oversized Openings in Walls	DEVICE / PLATES
00533	EZDP33WR	1	The Retrofit/Repair Wall Kit is a multi-purpose split mounting plate. It is designed to facilitate EZ-Path® device installations around previously installed cables—or in new or existing cabling applications—where a large opening or opposing offset openings have been created in either gypsum board or masonry block walls. The assembled two-piece plates measuring 8 in. x 10 in. (203 mm x 254 mm) can be rotated independently of each other in 90° increments to cover irregular or offset openings.	 EZDP33WR Full kit
00535	EZP133R	6		
UPC# 730573	ITEM NO.	CASE QTY (min)	Extension Module	DEVICE / PLATES
00005	EZD33E	1	Extension modules attach to the end(s) of the Series 33 pathway and increase the effective length for thicker barriers. Each extension module increases the effective length by 6 in. (152 mm). Extensions work with all other accessories. Sold as individual devices.	
UPC# 730573	ITEM NO.	CASE QTY (min)	Positioning Clamps	DEVICE / PLATES
00135	EZP133PC	1	Positioning clamps are used to position and secure pathways in applications where standard wall plates will not be used and the device will be either backfilled or caulked into an opening. Sold in pairs. Caulk and sealant products sold separately.	
UPC# 730573	ITEM NO.	CASE QTY (min)	Radius Control Module	DEVICE / PLATES
00933	RCM33	1	Radius Control Modules (RCMs) snap into the ends of pathways and provide a 1 in. (25 mm) minimum bend radius for cables. RCMs support cable bundles at 100% rated loading. Insertion slots are provided for support ties (not included). Sold in pairs.	

Series 22 Fire-Rated Pathway

The EZ-Path® Series 22 Fire-Rated Pathway is a maintenance-free pathway solution for smaller cable bundles through fire-rated wall assemblies. The device is offered as a complete kit without the need for additional accessory products for installation.

Features & Benefits:

- Self Sealing design provides exceptional fire and smoke leakage ratings
- Allows for easy moves, adds, and changes
- Designed for new and existing conditions
- Suited for round and rectangular openings



UPC# 730573	ITEM NO.	CASE QTY (min)	Single Pathway - Full kit	DEVICE
00022	EZD22	6	Designed for new or existing cable installations through walls up to 9 in. (229 mm) thick. The pathway is designed to be installed in a 2" (51 mm) round opening or 1-3/4" (44 mm) square opening.	



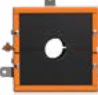

Retrofit Device

Overfilled cable sleeves are the bane of every facilities team. Bring these deficient openings back into code compliance with the EZ-Path® Retrofit Device. Its two-part clam shell design installs around projecting sleeves and cable bundles, restoring fire and smoke leakage performance. The EZ-Path® Retrofit Device quickly and easily retrofits sleeves of up to 100% visual fill, restoring fire performance without the need for additional firestop products.

Features & Benefits:

- Sized for 2 in. and 4 in. metallic sleeves
- Designed for cable sleeves and stubs
- Professional fit and finish
- Safety Orange for easy identification
- Suited for round and rectangular openings



UPC# 730573	ITEM NO.	CASE QTY (min)	Retrofit Device - Pair	DEVICE
00200	EZDR200	4	EZ-Path® Retrofit Device for 2 in. (2-3/16 in. or 2-3/8 in. O.D.) Sleeves; One Pair (2).	
00201	EZPR150	1	EZDR200 Adapter Plate for 1.5 in. sleeves; One Pair (2).	
00400	EZDR400	4	EZ-Path® Retrofit Device for 4 in. (4-1/2 in. O.D.) Sleeves; One Pair (2).	
00401	EZPR300	1	EZDR400 Adapter Plate for 3 in. sleeves; One Pair (2).	


EZ-Firestop® Grommet

EZ-Firestop® Grommets make sealing penetrations of individual and small bundles of cables through gypsum board walls a snap. Molded from premium plenum-plastics and incorporating a soft foam inner core, EZ-Firestop® Grommets eliminate the need for sleeves, firestop putties, and sealants.

Features & Benefits:

- Suited for addressing single membrane or complete through-penetrations
- Available as a single cable or multiple cable solution
- Ideal for alarm, security, or wireless access point installations
- Designed for 1 & 2 hr fire-rated gypsum board wall assemblies
- Professional finished appearance



UPC# 730573	ITEM NO.	CASE QTY (min)	Firestop Grommets	DEVICE
25058	RFG1	10 Packages	Two-piece split cable grommet for small cable penetrations up to 0.27 in. (7 mm) O.D. One package contains 10 grommets.	
25059	RFG2	10 Packages	Two-piece split cable grommet for small cable penetrations up to 0.53 in. (14 mm) O.D. One package contains 10 grommets.	